



plastibérica

SMART PLASTIC SOLUTIONS

*Inner strength
outer beauty*

catalogue

Index



04 | Plots-Advanced systems



06 | TPE / EE



18 | Basic Line



20 | Accessories

ABOUT US

Plastiberica Group is a company founded in Zaragoza in 2006 by a group of engineers with extensive experience in the field of thermoplastic injection and a clear vocation for innovation, aesthetic and functional design.

Since our beginnings in Plastiberica Group, innovation, the quality of our products, and customer service have been our premises. Business ethics, commitment to our customers and employees are the values that run our day-to-day.

Currently, we have more than 140 references of our own design that have led us to be the absolute leaders in the Spanish bedding sector.



DURABILITY & RELIABILITY.

We can ensure the quality of the final product thanks to the confidence that comes from working with top-quality materials. In addition, we have state-of-the-art machinery, which allows us to carry out production processes more efficiently and precisely.



ECO-FRIENDLY COMPANY.

We are committed to taking care of the environment. To this end, we implement continuous improvement measures to minimize our environmental impact and reduce greenhouse gas emissions. This includes the use of renewable energies, such as solar panels that cover 30% of our energy consumption, and the use of high-quality recycled raw materials.



FAST DELIVERY.

We know that time is precious and we value it. That is why we are committed to deliver the product to the customer within 24/48 hours from the second production. This is achieved through meticulous production planning and always keeping a safety



R&D.

Our team of expert designers are our most valuable asset. We are continuously updating ourselves in design, materials and processes to be always at the forefront of design, developing pieces of high added value for our customers. Nowadays, we count on 140 references of our own design and a multitude of customer specific designs. We offer our customers a fully comprehensive service, from the conception of the product, through 3D design, prototyping, testing, mould management and first trials to series production and delivery to the customer's premises.

PLOTS ADVANCED SYSTEMS

QUICK AND EASY ASSEMBLY SYSTEM

Plots-Advanced systems are a technological solution from our Research, Development and Innovation Department who is continually investing in new designs with elegant lines which moreover solve important factors like production time, efficiency and components performance, revolutionizing the assembly and finishing processes.



CLOVER

QUICK FIT

Clover has an attractive bi-colour design. It reduces production time by 60-70% as it is assembled in just two parts. Easy, quick and intuitive installation. It also offers two adjustable hardness levels. Patented in the European Union.

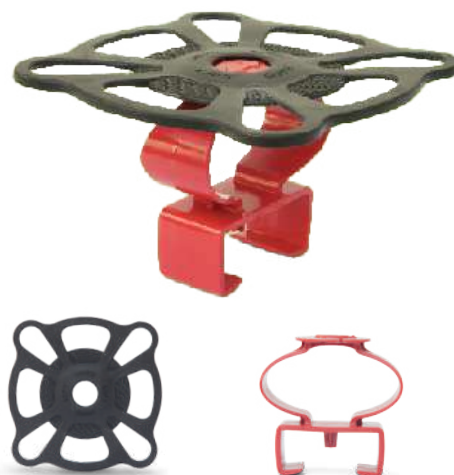
Suspensión in TPE/EE, plate in PP.

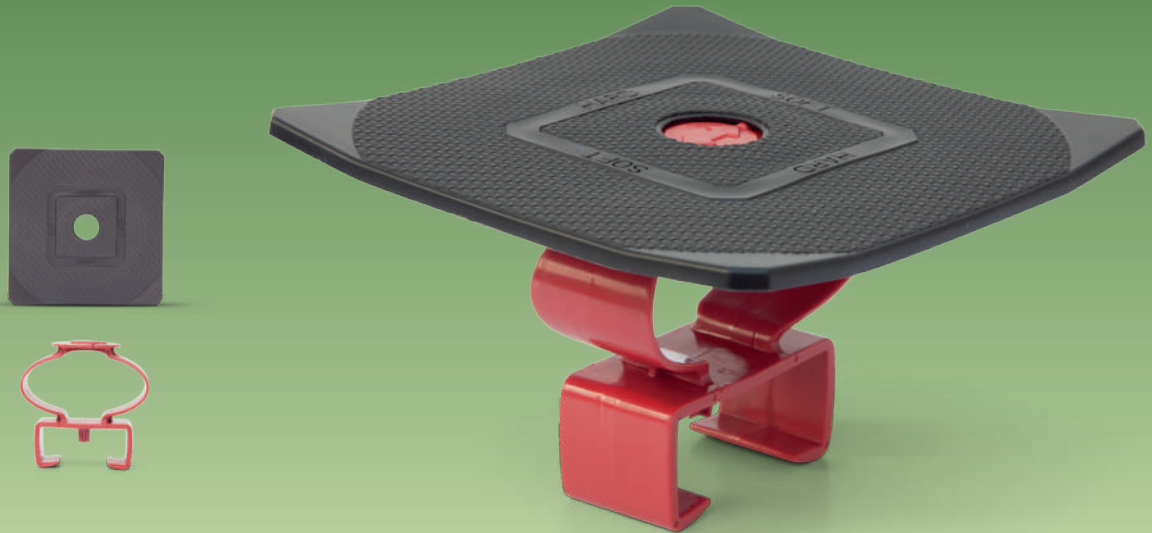
CYCLO

QUICK FIT

With this new and efficient product design reduces production time between 60 and 70% to solve the assembly with only two pieces of easy, quick and intuitive installation, keeping two different levels of adjustable hardness. Patented in the European Union.

Dock ring in TPE/EE, platform in PP.





ELEGANCE

QUICK FIT

Elegance has both an attractive design line and reduces production time between 60 and 70% to solve the assembly with only two pieces of easy, quick and intuitive installation, keeping two different levels of adjustable hardness. Patented in the European Union.

Dock ring in TPE/EE, platform in PP.



BUTTERFLY

This patented design plot in the European Union allows adjustment, simply, three different hardness levels thanks to its regulator easily triggering the finger.

Dock ring and regulator in TPE/EE, platform in PP.

TPE/EE

The product line TPE/EE is designed to efficiently match the wide range of slats measures, anchoring and mounting systems across the European bedding industry, offering a smart suspension system and reliable quality.



BIMAT | ∞

Revolutionary cap, 100% customizable top in colour and design, fitted with lying suspension and produced in high quality material. Quick lateral assembly system for wooden frames

Available for 38 x 8 mm slats.
Produced in TPE/EE



CLICK CAP |

Easy and functional cap designed for lateral assembly for wooden frames.

Available for 38 x 8 mm slats.
Suspension and caps in TPE/EE



SUNNE | |

This smart model is designed for quick lateral assembly system for wooden frames, also available for stapling.

Available for 38 x 8 mm slats.
Suspension and caps in TPE/EE

COMBI Long | ∞

This model has three pieces designed for quick assembly system for wooden frames, available in short and long models. Patented in the European Union.

Available for 38 x 8 mm slats.
Suspension in TPE/EE, caps in PP.



COMBI Short | ∞

Available for 38 x 8 mm slats.
Suspension in TPE/EE, caps in PP.

ECO | ∞

Simple and economical model designed for superior double anchoring system, available only in short model.

Available for 38 x 8 mm slats.





INTEGRAL Long | | |

A piece with a great performance in damping, anchors depending on model, available in short, long and central version.

Available for 38 x 8 mm slats.

INTEGRAL Short | | |

Available for 38 x 8 mm slats.



INTEGRAL Central |

Available for 38 x 8 mm slats.



SUNRISE Long |

Model with soft lines and a texture reminiscent of the sun's rays. Available in long and short versions. Anchoring systems: lateral pin and upper double anchorage

Available for 38 x 8 mm slats

SUNRISE Short |

Available for 38 x 8 mm slats



SUNRISE Central |

Available for 38 x 8 mm slats



SCOPE Long | |

Model with clean lines and texture on the top, available in long and short versions. Anchoring systems: lateral pin and upper double anchorage

Available for 38 x 8 mm slats



SCOPE Short | |

Available for 38 x 8 mm slats

SCOPE Central |

Available for 38 x 8 mm slats





CIRO Long |

Model with simple and elegant lines available in long and short versions. Anchoring system: lateral pin

Available for 38 x 8 mm slats



CIRO Short |

Available for 38 x 8 mm slats



RIVER Long |

Model with stylised lines and textures in the upper area and grooves that leave the slats visible adding dynamism. Available in long and short versions. Anchoring system: Lateral Pin

Available in long and short versions. Anchoring system: Lateral Pin

RIVER Short |

Available in long and short versions. Anchoring system: Lateral Pin





FUSION | 66

This Bi-colour model consists of three parts designed for a quick assembly system for wooden frames, available in short and long versions. Anchoring system: double anchoring for wooden frames.

Available for 38 x 8 mm slats

FUSION Triple | 666

Bi-colour model for 3 slats consisting of 4 pieces designed for quick assembly. Available for long and short versions. Anchoring systems: upper double anchorage

Available for 38 x 8 mm slats



NAVY Long | 66

Bi-colour model with elegant and clean lines, available in long and short versions. Anchoring system: lateral pin

Available for 38 x 8 mm slats

NAVY Short | 66

Available for 38 x 8 mm slats





SKYPEL Long | | |

New design with large suspension travel, anchors depending on model, available in long, short and central version.

Available for 38 x 8 mm slats.



SKYPEL Short | | |

Available for 38 x 8 mm slats.



SKYPEL Central |

Available for 38 x 8 mm slats.



STREAM Long | |

Design of stylised lines and textures in the upper part with grooves that leaves the slats visible. Optimal performance of the suspension. Available for two different anchoring systems: wooden frames and lateral anchorage. Also available in long and short version.

Available for 38 x 8 mm slats.

STREAM Short | |

Available for 38 x 8 mm slats.





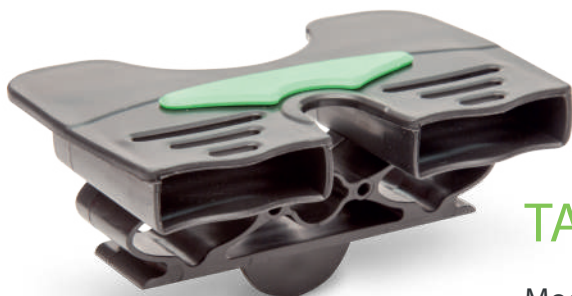
SURGE Long | |

Sleek and texturized design specially designed to be adaptable for different slat sizes and versatile as well for 2 and 3 slats. Available for two different anchoring systems: wooden frames and lateral anchorage. Also available in long and short version.

Available for 4 different slats configurations:
38 x 8 mm | 25 x 8 mm | 38 x 12 mm | 25 x 12 mm

SURGE Short | |

Available for 4 different slats configurations:
38 x 8 mm | 25 x 8 mm | 38 x 12 mm | 25 x 12 mm.



TABLET Long | | |

Model with modern lines available in long and short version. Anchoring systems: Spanish double python, lateral anchorage and "a graffé".

Available for 38 x 8 mm slats.

TABLET Short | | |

Available for 38 x 8 mm slats.





TEX Lateral | रुरु

Design of simple shapes created especially for the spanish upper double anchorage, available in lateral and central version.

Available for 38 x 8 mm slats.



TEX Central | रुरु

Available for 38 x 8 mm slats.



TRILAMA Lateral | रुरु

Top model designed for 3 slats, upper double anchorage. Lateral and central versions also available.

Available for 38 x 8 mm slats.

TRILAMA Central | रुरु

Available for 38 x 8 mm slats.



BASIC LINE

Made in polyethylene, these designs provide solutions to systems with double upper anchorage with optimum results and great value for the money. These caps ensure security, performance and quality at entry level prices.



ECO Lateral part
120 | ₹₹₹



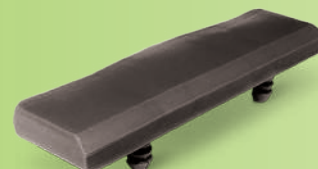
ECO Central part
120 | ₹₹₹



3 Slat Lateral part
160 | ₹₹₹



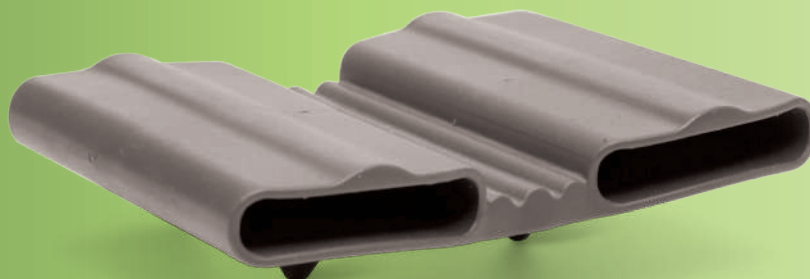
3 Slat Central part
160 | ₹₹₹



3 Slat part
160 | ₹₹₹



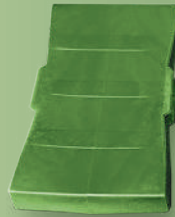
ECO Lateral part
100 | ₹₹₹



ECO Central part
100 | ₹₹₹



Lateral part
120 | रु२२५



Central part
120 | रु२२५



Lateral part
53 | रु२२५



Central part
53 | रु२२५



Lateral part
70 | रु२२५



Central part
70 | रु२२५



Inlaid
70 | रु२२५



Lateral part
85 | रु२२५



Central part
85 | रु२२५



2 Slat Lateral part
100 | रु२२५



2 Slat Central part
100 | रु२२५

ACCESSORIES

A selection of our extensive accesories catalogue.



End cap for profiles 50 mm



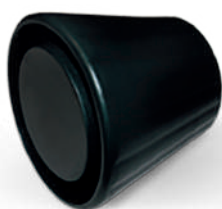
End cap

Made in polypropilene.



Curve cover

Made in polypropilene.



Cover for profiles 50 mm

Made in polypropilene.



Python | ∞

Anchorage for these models:
Surge, Steam, Skypel y Combi.

Made in poliamide. Available for wooden frames

REGULATOR

This design, besides providing an aesthetic quality non existing until its release, optimizes assembly work around a 10%. A technological breakthrough of which have already sold more than 15 million units at a competitive price.

Available for 38 mm, 53 mm and 36 mm slats.
Made in polypropilene.



Kneecaps

Made in polypropilene.



Wheel

Made in polypropilene.



Cap

Made in polypropilene.



Three Slat

Regulator for a third slat, designed to regulate the firmness of the slats and adapt it to the customer's preferences.

Available for 38 x 8 mm slats



Corner 50x20

Corner for 50x20.

Available for 50x20 profiles.



plastiberica

SMART PLASTIC SOLUTIONS

*Inner strength
outer beauty*

📍 P. I. El Aguila nave 79,
50180 Utebo (ZARAGOZA) SPAIN
☎ (+34) 976 774 105 📱 (+34) 661 956 800
✉ info@grupoplastiberica.com

www.grupoplastiberica.com



MADE IN EUROPEAN COMMUNITY
PRODUCTS CONFORMS TO EU STANDARDS